

MONACO 2015



HUMBERSIDE AIRPORT TRAVEL

Humberside Airport
Grimsby Rd
DN39 6YH

01652 682 000

sales@humbersideairporttravel.co.uk

Airport
travel



Prices include coach transfers for Secteur Rocher and grandstands P, T & Z.
All other packages include minibus transfers.

THE RACE

The Monaco Grand Prix—competed since 1929—is widely considered to be one of the premier racing events in the world. Held on a narrow course tracing the winding streets of Monaco with changes in elevation, tight corners and the now legendary hairpin and tunnel section make it a test of nerve for the drivers and a source of thrills and excitement for the spectators. Indeed the tunnel itself presents a problem unique in the world of motor racing with the drivers' eyes having to rapidly adjust from the dark interior section to bright Mediterranean sunlight and vice—versa

The first race, held on 14 April 1929 was organised by cigarette magnate Anthony Noghues under the auspices “Automobile Club de Monaco”

Most Victories: Ayrton Senna (6) 1987, 89, 90, 91, 92, 93

Lap record: Michael Schumacher 1:14.439 2004 (race proper)
 Kimi Raikonen 1:13.532 2006 (qualifiers)

Lap length: 3.34km (2.075 miles)



Casino Square

THE VIEWING AREAS

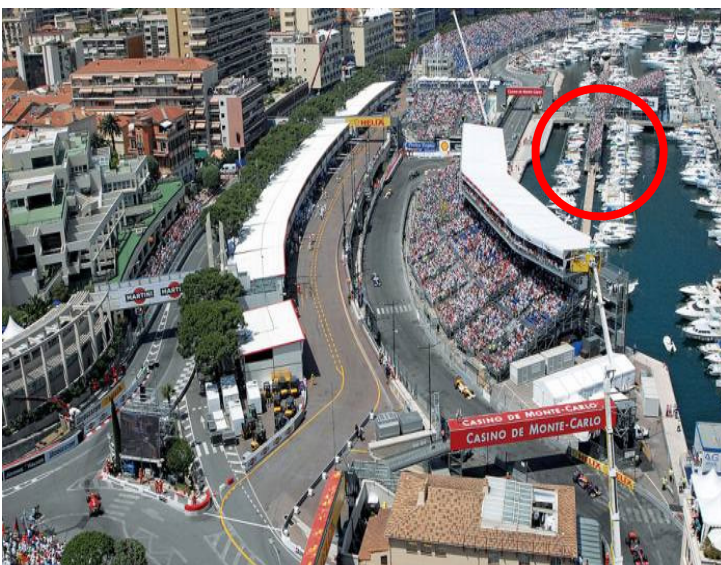
SECTEUR ROCHER



Our standard package comes with general entry tickets for the Secteur Rocher. Located on a hillside overlooking the harbour and underneath the royal palace and cathedral, our basic package offers views over the south western portion of the track. Please note that views may be partial or obstructed and this is not recommended for people with mobility problems due to difficulty of access and lack of seating.

£649 p/person

GRANDSTAND P



Grandstand P (as circled, left) is located on a pontoon in Monaco harbour itself and offers inland views as the cars negotiate the turns of the Piscine section of the track.

The Piscine swimming pool complex has two chicanes – a fast one on the entrance and a slower one on the exit. It is at the centre of the Monaco Harbour and is surrounded by spectacular views across the bay.

£1099 p/person

THE VIEWING AREAS

GRANDSTAND T



Grandstand T is located back on Terra firma immediately after the pontoon grandstands N,O & P. It faces inland before the tight right at the end of the harbour section. Just before the pit lane entrance, La Rascasse corner is the second to last of the race and follows on from the Piscine and the straight along the docks of the harbour. This also enjoys a screen to watch the rest of the race, as well as great views of the harbour. Grandstand T is also directly opposite the pits.

£1099 p/person

GRANDSTAND Z



Grandstand Z is located by the Nouvelle Chicane section of track (pictured) and is the section of track immediately following the tunnel.

One of the most challenging sections of track for the drivers owing to changing light conditions and tight corners, This also offers fantastic views across the harbour so those hoping to spot a celebrity on a boat may wish to consider this option!

£999 p/person

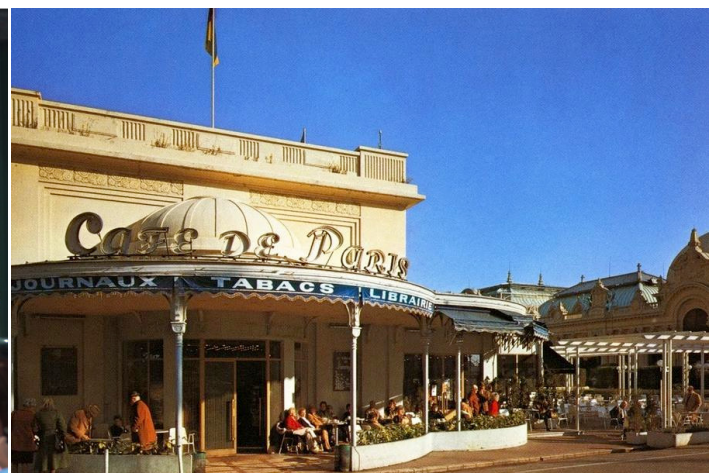
THE VIEWING AREAS

CAFÉ DE PARIS



Café de Paris at left of picture (taken from Casino Square grandstand)

The Café de Paris affords a commanding location right on Casino Square where you can witness the cars come screaming past the casino before disappearing round the back of the square and on to the famous hairpin section. A large screen relays the excitement around the track so you won't miss any of the action. Included in the price is a three course meal served out on the terrace with half a bottle of wine per person. Of course the Café de Paris also serves an extensive selection of local and international wines, beers and spirits which can be purchased at extra cost.



Price **£999** p/p

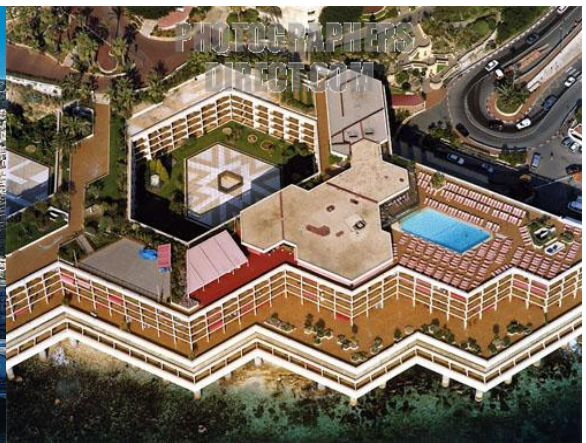
DE LUXE VIEWING

FAIRMONT HOTEL & TERRACE



The Fairmont Hotel is located at the famous hairpin in the section of the track between Casino Square and the tunnel. Watch the weekends racing from the comfort of your reserved Fairmont Stadium Seat in the specially constructed Fairmont rooftop grandstand. Enjoy unobstructed views of the technical Fairmont Hairpin which is known for its 'thrills and spills.' A giant screen is located adjacent to the terrace ensuring guests keep abreast of the action elsewhere around the circuit. A casual poolside buffet luncheon is served which compliments the relaxed atmosphere found on the terrace.

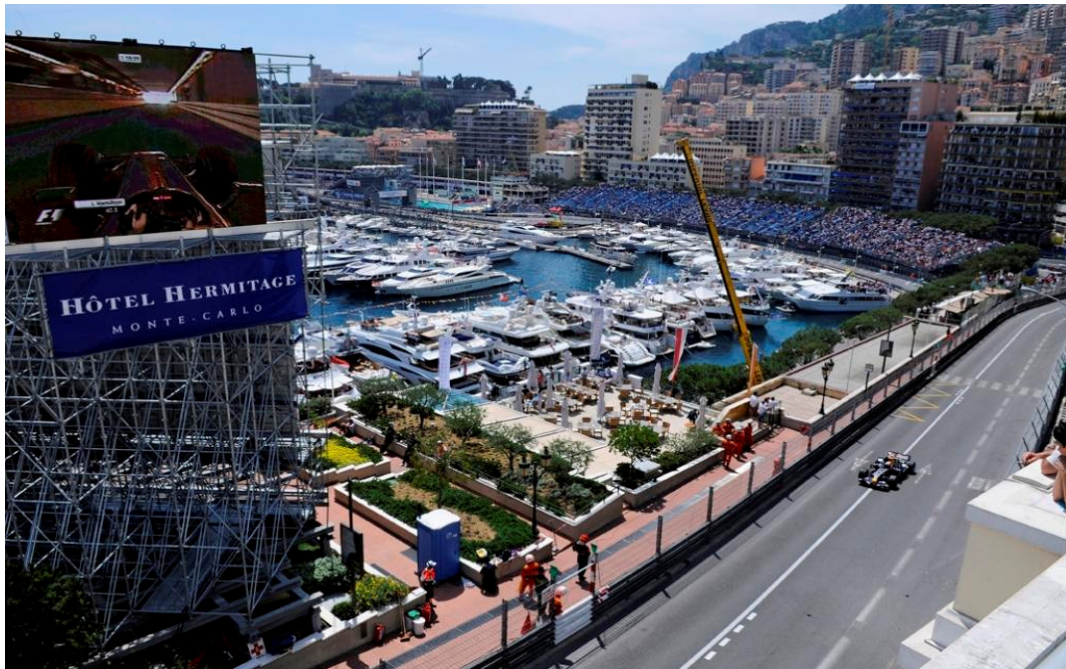
- Enjoy unobstructed views of the famous Fairmont Hairpin.
- A light buffet luncheon is served by the rooftop pool.



£1499 p/person
(price is for Sunday package)

DE LUXE VIEWING

HOTEL HERMITAGE MIDI TERRACE



The Midi Terrace in the Hotel Hermitage offers stunning views over the track and harbour from this spacious race viewing terrace. Enjoy high speed race viewing as the cars exit the first corner at Sainte Devote and race up the Beau Rivage hill. A specially built Belvedere terrace has been constructed for even better views of the circuit and harbour. A giant screen opposite the terrace helps guests to keep abreast of all the racing around the circuit. This location offers trackside viewing of the Beau Rivage straight up to the bassinet corner. A superb luncheon is served at the hotel's Eiffel Mezzanine restaurant, designed by Gustave Eiffel himself. Includes an afternoon drinks package of champagne, beers, fine wines and soft drinks. Large outdoor screens directly opposite the viewing area (until approx 16:00)



£2199p/person
(Sunday package)

FLIGHT TIMES

24 MAY 15 STANSTED—NICE 07:00—10:00 ZT9651
24 MAY 15 NICE—STANSTED 22:00—23:00 ZT9652

Flights with Titan Airways

(Once the above plane is full, the following flight will be used)

24 MAY 15 STANSTED—NICE 07:15—10:15 ZT8966
24 MAY 15 NICE—STANSTED 22:15—23:15 ZT8967

Flights with Titan Airways

24 MAY 15 MANCHESTER—NICE 06:30—09:50 HV8509
24 MAY 15 NICE—MANCHESTER 21:30—23:00 HV8510

Flights with Transavia

24 MAY 15 HUMBERSIDE—NICE 07:00—10:00
24 MAY 15 NICE—HUMBERSIDE 22:10—22:40

Flights with DenimAir—includes 34 inch seat pitch

24 MAY 15 GLASGOW—NICE 07:30—10:45
24 MAY 15 NICE—GLASGOW 22:00—11:15

Flights with BA

- 31 inch seat pitch
- V.I.P. charter aircraft
- Leather seats
- Cooked breakfast on outbound. Dinner on return.
- Complimentary drinks on flight
- Return transfers on the day (coach to Secteur Rocher and grandstands P, T & Z. Minibus to all other.)
- Services of Worldchoice Sports rep throughout.